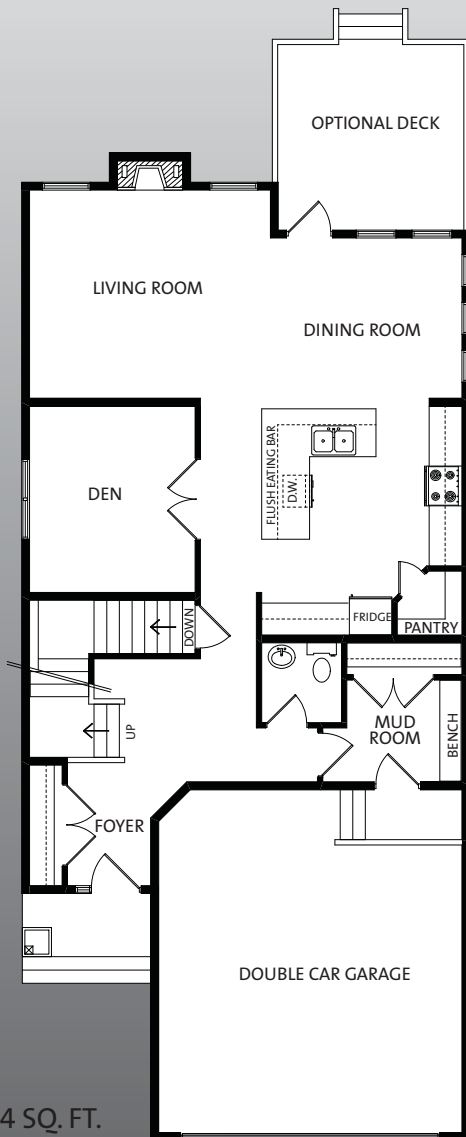


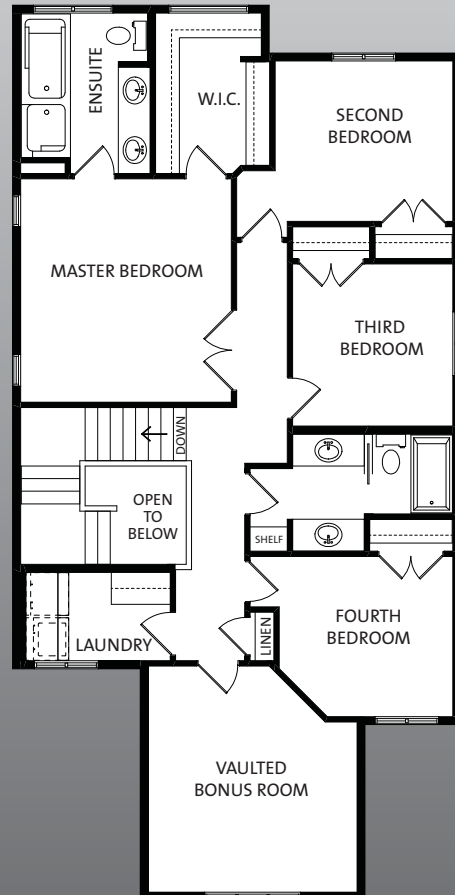
MOTMOT



HOUSE MODEL : FRONT GARAGE
PLAN TYPE : TWO STOREY
BEDROOMS : 4
BATHROOMS : 2.5
BUILDING POCKET : 28'
TOTAL SIZE : 2342 SQ. FT.



9' MAIN FLOOR - 1094 SQ. FT.



8' SECOND FLOOR - 1248 SQ. FT.



CRIMSON COVE
HOMES

WWW.CRIMSONCOVEHOMES.COM

This plan is the property of Crimson Cove Homes Inc. and all rights are reserved, including the right of reproduction in whole or in part. Renderings and floorplans are artist's conceptions. Crimson Cove Homes Inc. reserves the right to alter or modify the renderings, floorplans and specifications without prior notice. Dimensions shown are approximate. Shown in Craftsman elevation.

HOUSE PRICE : \$ _____
INCLUDES LOT AND GST

LOT # : _____

MOTMOT

NEO-TRADITIONAL ELEVATION



CRAFTSMAN ELEVATION

